



www.gteic.ie



Greasán Digiteach na

Gaeltachta

socoisdealbha@udaras.ie



Udaras na Gaeltachta will develop over 30 gteic in Gaeltacht areas by 2021.

Currently Completed

Galway 120+ seats	Mayo 140+ seats	Kerry 30+ seats	Donegal 310+ seats	Cork 20+ seats
<ul style="list-style-type: none"> • An Spideal (40+ seats) • Na Forbacha (40+ seats) • Ceathrú Rua (30+ seats) • Carna (8 seats) 	<ul style="list-style-type: none"> • Béal an Mhuirthead (70 seats) • An Eachléim (23 seats) • An Corran Buí (8 seats) • Acaill (37seats) 	<ul style="list-style-type: none"> • An Daingean (30+ seats) 	<ul style="list-style-type: none"> • Gaoth Dobhair (300 seats) • Arainn Mór (13 seats) • AN Teramann (12 seats) • Na Dúnaibh (10 seats) • Cill Chartha (Westbic) 	<ul style="list-style-type: none"> • Béal Atha an Ghaorthaigh (20+ seats)

Planned

Galway 70 + seats	Mayo 30 + seats	Kerry 30+ seats	Donegal 310+ seats
<ul style="list-style-type: none"> • Corr na Móna (20+ seats) • Leitir Móir (20+ seats) • Inis Mór (20+ seats) • Carna (expansion) (8 seats) 	<ul style="list-style-type: none"> • Tuar Mhic Éadaigh (6 to 8 seats) • Gaoth Sáile (20 + seats) 	<ul style="list-style-type: none"> • Baile na Sceilig (50+ seats) 	<ul style="list-style-type: none"> • An Clochán Liath (20 seats) • Cill Chartha (10+ seats)



- **Remote Workers**
- **Home Workers (Services)**
- **Diaspora (Holidays)**
- **Start-Ups / SME Expansion**
- **SME Digitalisation (Local)**
- **Digitalisation in the Community**
- **Industry 4.0**



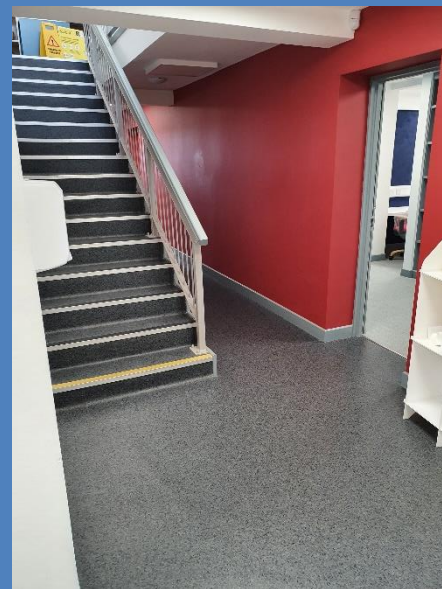
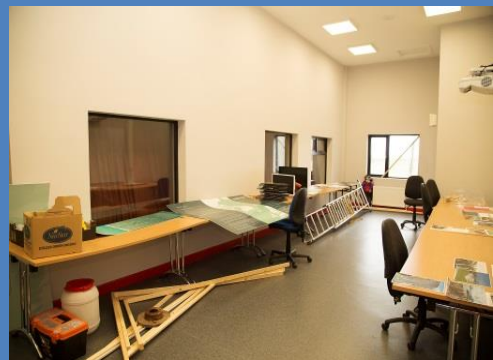


Lessons Learned

- Key Facilities
 - Video Conferencing vital
 - Privacy Booths
 - Reception ???
 - Get an Architect (Its all about visuals & feel)
 - Don't Underestimate Costs (Good QS)
 - Include Cost of Telecom Systems and Distribution (Raised Floors?)
 - Canteen
 - Flexible Reconfiguration (if possible)
- Automate as Much as possible
- Research Local Business / Facilities
 - Remote Workers
 - Office/Co Working space ratio (Privacy)
 - Displacement
- Create Networks
 - WDC (Booking)
 - Education / Training Resources
- Plan Events (even pre build)
- Town Centre (access to coffee shops etc.)
- High Quality
- Operating Structure and Business Model



Eachléim (23 seats)



Type of Community Facilities Reimagined

- Eachléim Community Hall
- 3 Rooms (One already as an Office)
- 23 seats
- Cost c. €100k
- C. 200 m2
- Video Conferencing Room
- Existing
 - 1 Office, 2 Rooms and small training room
- New
 - 1 Shared Office
 - 1 Room converted to 4 individual semi private
 - 1 Room converted to 10 shared desks
 - Training Room modified to Training & Video Conferencing.
- 10 fulltime and 4 students



Beal an Mhuirthhead (70 seats)

Gteic @BanM

- **Overview**

- The gteic@BanM is situated on 2 campuses with the Innovation Centre being located in the Aisleann and the Business Campus being located in an Industrial Estate approx. 200m away.

- High capacity, high speed fibre optic broadband (1000MB enabled)
- 30 coworking/hot desk spaces (with capacity to increase by another 50)
- 18 private offices varying in area from 14m² to 75m² (Flexible)
- 140-seater presentation theatre
- Boardroom with AV (Video Conferencing) solution
- Training room
- Break out areas
- Canteen
- C. 100 m2
- About 50 working in it now

Current and regular residents in the co-working spaces include Nutraceutical Formulation (Ph D.), Quality Management, Operations Director, Software Engineer, Data Analyst, Marketing & Sales Personnel, Gaming & Internet Production, Accountancy, HR Management

Companies

**Bioshell , Reitigh Cliste ;Wild Atlantic Studios. CB Media EC Diagnostics RHS Homcare
SEAI Ocean Energy Mayo Ideas Lab Lliber Investments Ltd. IPSOS/MRBI Soogroo :**





Cois Fharraige (Collaboration)

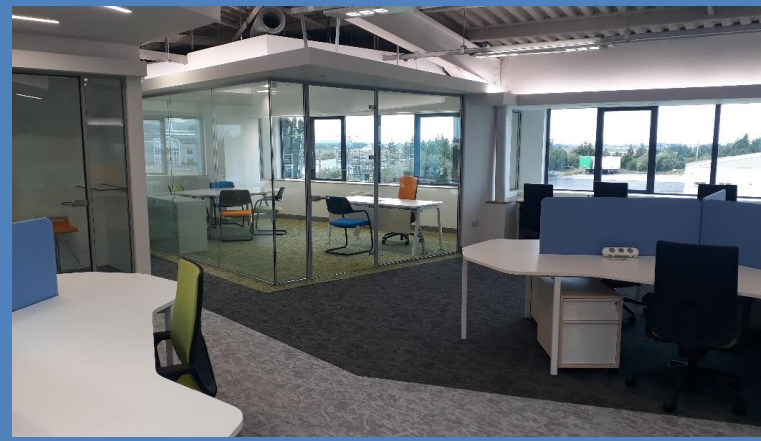


An Spidéal & Na Forbacha

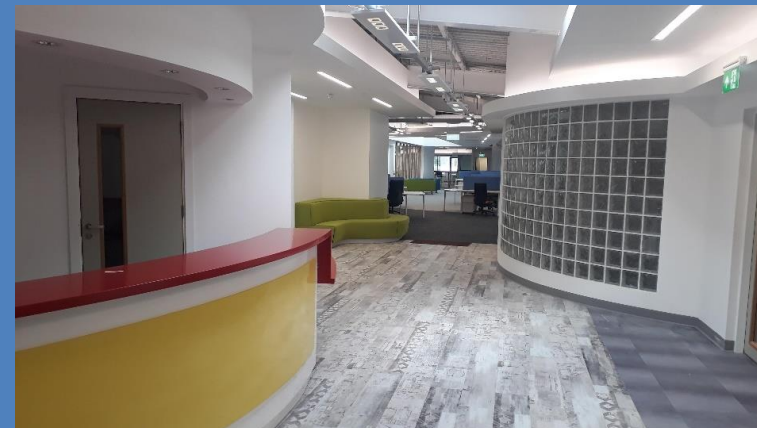
Overview

The new Gteics in An Spideal and Na Forbacha have recently opened with over 80 seats between them. These were opened just before COVID so the number of tenants in them at the moment is quite low.





Gaoth Dobhair (300 seater)



Overview

High capacity, high speed fibre optic broadband (1000MB enabled, soon to be running at 5000MB)

300 coworking/hot desk spaces

40 private offices varying in area from 14m² to 205m²

50-seater presentation theatre

Boardroom

Training room

Video conferencing rooms

Break out areas



An Daingean

Overview

Provision of shared workspace facilities

- High tech work environment
- Connectivity
- Online provisions

Antecedents for new employment

- Research and Innovation across thematic pillars
- Multi-generational involvement
- Multi-organizational involvement
- Local to International levels

Aggregate / demand for local enterprises to scale from

- Contract generation through project work

Promotion and nurture of home / remote working community

- Networking
- Linking people to opportunities

Incubation





Key Takeaways :

- **Facility for todays worker (High level of expectation)**
- **Digitalization is happening and will accelerate**
- **Networking**
- **Build once and build well (with inbuilt flexibility)**
- **Digital & Green Start -Up**
- **Build communities around the facility**
- **Community Enterprise / Not Community Development (Building is the easy part).**
- **Develop a KPI**
- **EDIH (European Digital innovation Hubs)**



www.gteic.ie



gteic @ Béal an Mhuirthhead